

"Drachenfelsbahn" Königswinter

Drachenfelsstr. 51
53639 Königswinter

Tel: +49 2223 92090

info@drachenfelsbahn.de
www.drachenfelsbahn.de

Information for people with hearing impairments and deaf people

Information on accessibility was reviewed on September 11, 2024 as part of the quality criteria / system "Tourism for all".

Images of the building/object



"Drachenfelsbahn"
Königswinter

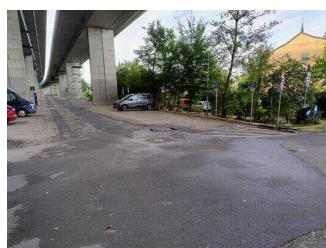
©www.drachenfelsbahn.de



"Drachenfelsbahn"
Königswinter

©Randolph French

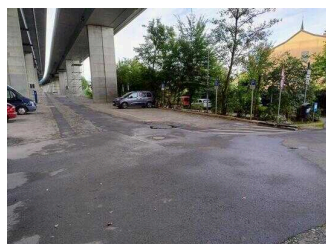
Parking lot under the bridge



Parking lot under the
bridge

©Randolph French

Parking lot under the bridge



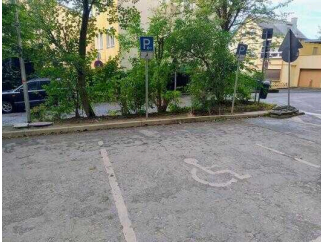
Parking lot under the
bridge

©Randolph French



Parking lot under the
bridge

©Randolph French



Parking lot under the bridge

©Randolph French

There is a general parking lot available.

There is at least one parking space for people with disabilities.

There is/are 3 parking space(s) for people with disabilities.

Parking space width: 345 cm

Parking space length: 500 cm

Distance from the parking space(s) for people with disabilities to the entrance area: 100 m

The parking space(s) for people with disabilities is/are marked.

Parking lot next to the railway tracks



Parking lot next to the railway tracks

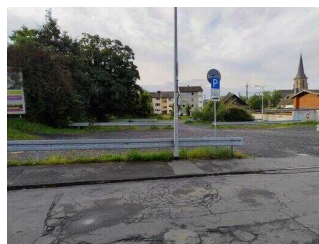
©Randolph French

Parking lot next to the railway track



Parking lot next to the railway track

©Randolph French



Parking lot next to the railway track

©Randolph French

There is no company parking available.

Es stehen an den Bahngleisen zwei weitere sehr große Parkflächen zur Verfügung. Dort sind zwar keine Stellplätze für Menschen mit Behinderung ausgeschildert, aber dennoch nutzbar.

ÖPNV



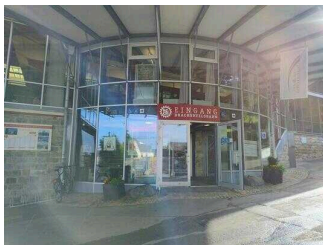
ÖPNV

©Randolph French

Blank module

Die nächste ÖPNV-Haltestelle (Königswinter Drachenfelsbahn) befindet sich in ca. 200m Entfernung auf der anderen Seite der Bahngleise.

Main entrance



Main entrance

©Randolph French

Main entrance area



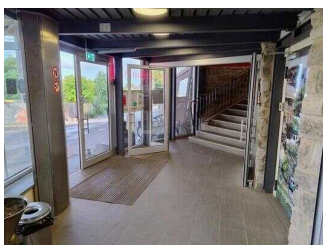
Main entrance door

©Randolph French



Floor covering in front of the main entrance door

©Randolph French



Main entrance area indoor

©Randolph French

Additional information only available in German: Hinter dem Eingangsbereich gelangt man nur über Treppen zu den anderen Gebäudebereichen.

Valley station

Valley station



Valley station

©Randolph French



Valley station

©Randolph French



Gear rail

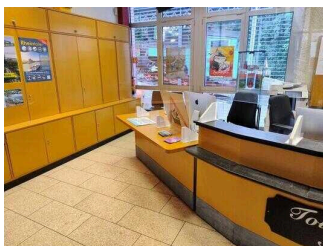
©Randolph French

Distance from the train/bus platform/ship pier to the entrance area for people with disabilities: 7 m

There is written train/bus platform/ship pier information available.

Additional information only available in German: A track with a cogwheel construction usually has to be crossed.

Counter/Cash Desk



Lowered area of the counter

©Randolph French



Cash register display

©Randolph French

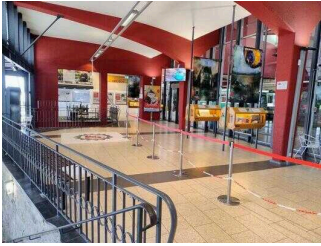


Cash Desk signpost

©Randolph French

The cash register display/price indication at the register is easily recognizable (e.g. large and swiveling).

Waiting room with exhibits



Waiting room with exhibits

©Randolph French



Exhibits

©Randolph French

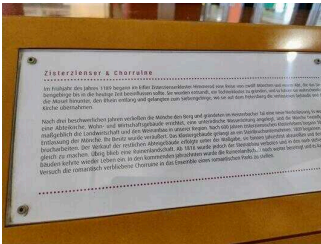
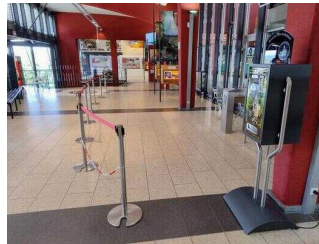


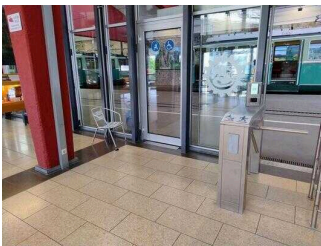
Exhibit descriptions

©Randolph French



Platform exit area

©Randolph French



Platform exit

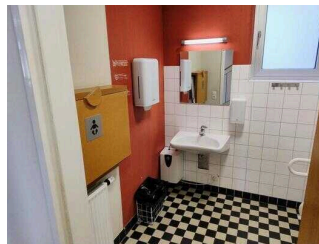
©Randolph French

Public toilet in the building



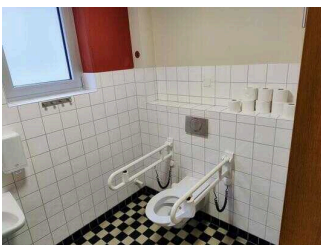
Public toilet door

©Randolph French



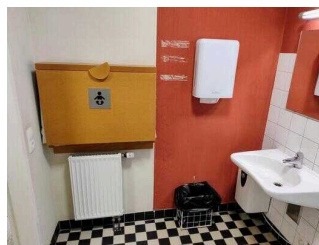
Public toilet

©Randolph French



Public toilet

©Randolph French



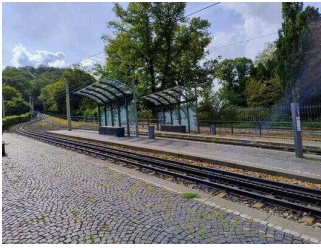
Public toilet

©Randolph French

Additional information only available in German: Ein Wickeltisch (hochklappbar) für Kleinkinder ist vorhanden.

Middle station

Platform middle station



Middle station

©Randolph French



Middle station

©Randolph French



Middle station
direction indicator

©Randolph French



Middle station bench

©Randolph French



Middle station access
route

©Randolph French

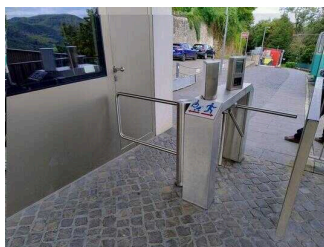
Distance from the train/bus platform/ship pier to the entrance area for people with disabilities: 10 m

There is no written train/bus platform/ship pier information available.

Additional information only available in German: Die Haltestelle an der Mittelstation hat ein Gefälle von 11%.

Mountain station

Platform mountain station



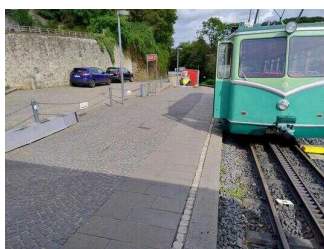
Mountain station entrance

©Randolph French



Mountain station information board

©Randolph French



Mountain station

©Randolph French



Miniature model at the mountain station

©Randolph French

Distance from the train/bus platform/ship pier to the entrance area for people with disabilities: 10 m

There is written train/bus platform/ship pier information available.

Additional information only available in German: Das maximale Gefälle an der Haltestelle beträgt 8%. Die Durchgangsbreite des Eingangs beträgt 90cm, des Ausgangs 1,70m. Der Fahrkartenschalter ist nicht mehr in Betrieb.

Cabin room / Cable cars

Rack railway wagon



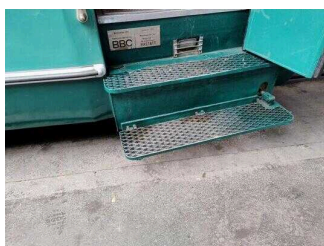
Rack railway wagon

©Randolph French



Rack railway wagon door

©Randolph French



Rack railway wagon entry steps

©Randolph French

Additional information is provided by the operator:

The journey is accompanied by staff.

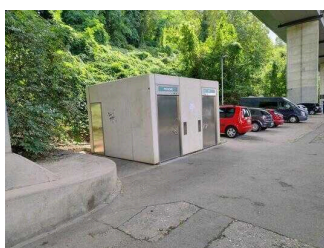
Public toilet at the parking lot



Public toilet

©Randolph French

Public toilet at the parking lot under the bridge



Public toilet at the parking lot under the bridge

©Randolph French



Public toilet at the parking lot under the bridge

©Randolph French

Am Parkplatz unter der Brücke befindet sich ein weiteres öffentliches WC. Der Zugang ist mit einem Euroschlüssel oder gegen Münzeinwurf möglich.

Aids

Alarm/Aids



Storage of the mobile ramps at the mountain station platform

©Randolph French

There is an alarm.

There is no clearly visible alarm.

Aids are offered.

Wheelchair,

Other aids offered: Es werden an allen drei Haltestellen mobile Rampen für den stufenlosen Zugang in die Zahnradbahn bereitgehalten.

Additional information only available in German: There is an audio file with a description of the ride to the Drachenfels.