

"Drachenfelsbahn" Königswinter

Drachenfelsstr. 51
53639 Königswinter

Tel: +49 2223 92090

info@drachenfelsbahn.de
www.drachenfelsbahn.de

Comfort for all generations

Information on accessibility was reviewed on September 11, 2024.

Images of the building/object



"Drachenfelsbahn"
Königswinter

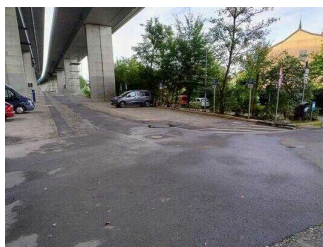
©www.drachenfelsbahn.de



"Drachenfelsbahn"
Königswinter

©Randolph French

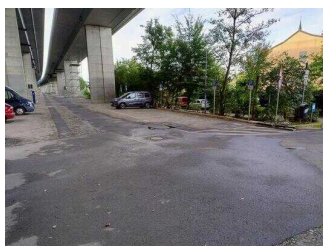
Parking lot under the bridge



Parking lot under the
bridge

©Randolph French

Parking lot under the bridge



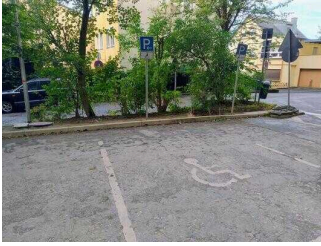
Parking lot under the
bridge

©Randolph French



Parking lot under the
bridge

©Randolph French



Parking lot under the bridge

©Randolph French

There is a general parking lot available.

External path from the parking lot to the main entrance



External path from the parking lot to the main entrance

©Randolph French



External path from the parking lot to the main entrance

©Randolph French

Length of the path: 80 m

The surface of the path is low in vibrations and easy to walk on (e.g. asphalt, narrow-jointed slabs, etc.).

Maximum longitudinal gradient of the path: 14 %

Maximum longitudinal gradient over a distance of 25 m.

There is no seating available.

The objective of the path is within sight.

Parking lot next to the railway tracks



Parking lot next to the railway tracks

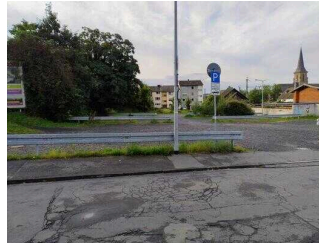
©Randolph French

Parking lot next to the railway track



Parking lot next to the railway track

©Randolph French



Parking lot next to the railway track

©Randolph French

There is no company parking available.

External path from the parking lot next to the tracks to the main entrance



External path from the parking lot next to the tracks to the main entrance

©Randolph French



External path from the parking lot next to the tracks to the main entrance

©Randolph French

Length of the path: 80 m

The surface of the path is low in vibrations and easy to walk on (e.g. asphalt, narrow-jointed slabs, etc.).

Maximum longitudinal gradient of the path: 7 %

Maximum longitudinal gradient over a distance of 30 m.

There is no seating available.

The objective of the path is within sight.

ÖPNV



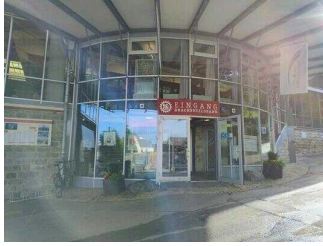
ÖPNV

©Randolph French

Blank module

Die nächste ÖPNV-Haltestelle (Königswinter Drachenfelsbahn) befindet sich in ca. 200m Entfernung auf der anderen Seite der Bahngleise.

Main entrance



Main entrance

©Randolph French

Main entrance area



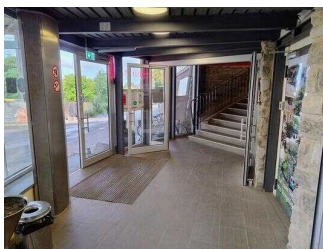
Main entrance door

©Randolph French



Floor covering in front of the main entrance door

©Randolph French



Main entrance area indoor

©Randolph French

The entrance door

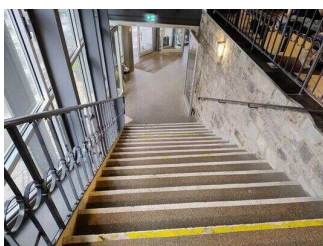
The door is opened without using any force (lever handle, light barrier sensor, motion detector, etc.).

The door or door frame is visually contrasted to its surroundings.

The threshold height: 1 cm

Additional information only available in German: Hinter dem Eingangsbereich gelangt man nur über Treppen zu den anderen Gebäudebereichen.

Stairs main entrance



Stairs main entrance

©Randolph French

Existing thresholds/steps: 17

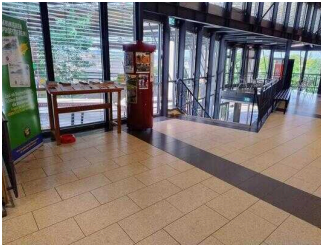
The height of the thresholds/steps: 16 cm

The stairs are straight.

The staircase has handrails on both sides.

The stairs are well lit and glare-free.

Path from the stairs to the cash desk



Path from the stairs
at main entrance to
the cash desk

©Randolph French

Minimum width of the corridor/way/aisle: 250 cm

The objective of the path is within sight.

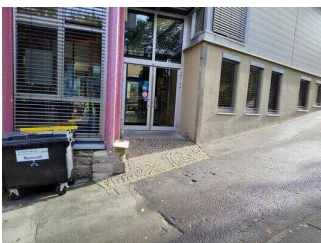
Side entrance



Side entrance

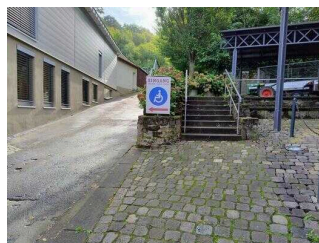
©Randolph French

Side entrance



Side entrance door

©Randolph French



Side entrance
signpost

©Randolph French



Side entrance indoor

©Randolph French

The entrance door

The door is opened without using any force (lever handle, light barrier sensor, motion detector, etc.).

The door or door frame is visually contrasted to its surroundings.

The threshold height: 1 cm

External path from main to side entrance



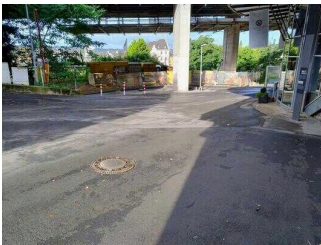
Signposting for side entrance

©Randolph French



External path from main to side entrance

©Randolph French



External path from main to side entrance

©Randolph French

Length of the path: 25 m

The surface of the path is low in vibrations and easy to walk on (e.g. asphalt, narrow-jointed slabs, etc.).

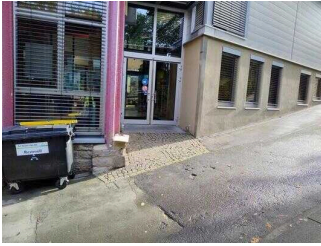
Maximum longitudinal gradient of the path: 14 %

Maximum longitudinal gradient over a distance of 15 m.

There is no seating available.

There are signs in visible distance.

Ramp side entrance



Ramp side entrance

©Randolph French

Maximum longitudinal gradient of the ramp: 24 %

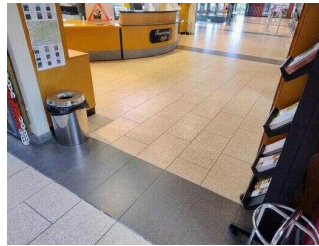
Minimum width of the ramp: 224 cm

Path from the side entrance to the cash desk



Path from the side entrance to the cash desk

©Randolph French



Path from the side entrance to the cash desk

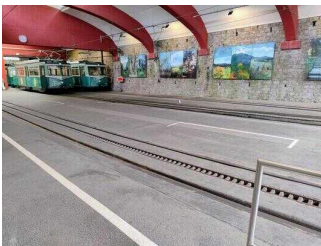
©Randolph French

Minimum width of the corridor/way/aisle: 250 cm

The objective of the path is within sight.

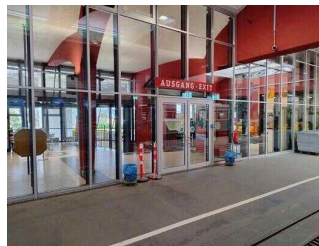
Valley station

Valley station



Valley station

©Randolph French



Valley station

©Randolph French



Gear rail

©Randolph French

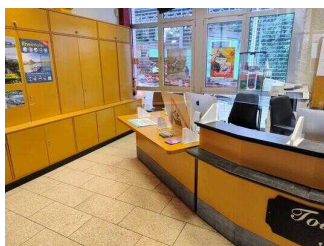
There are no seating areas available.

There is written train/bus platform/ship pier information available.

There is no audible train/bus platform/ship pier information available.

Additional information only available in German: A track with a cogwheel construction usually has to be crossed.

Counter/Cash Desk



Lowered area of the counter

©Randolph French



Cash register display

©Randolph French



Cash Desk signpost

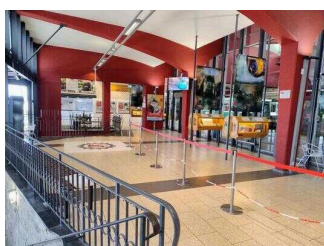
©Randolph French

The counter / cash desk is at its highest point 102 cm high.

The counter / cash desk is at its lowest point 76 cm high.

There is another, equivalent communication possibility while in a sitting position.

Waiting room with exhibits



Waiting room with exhibits

©Randolph French



Exhibits

©Randolph French

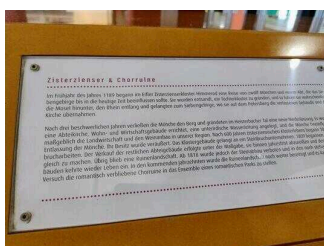
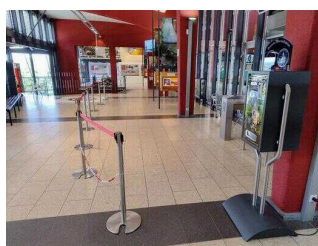


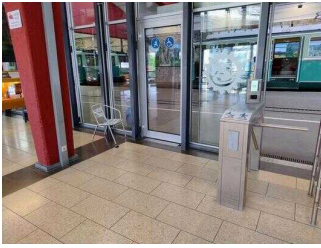
Exhibit descriptions

©Randolph French



Platform exit area

©Randolph French



Platform exit

©Randolph French

Public toilet in the building



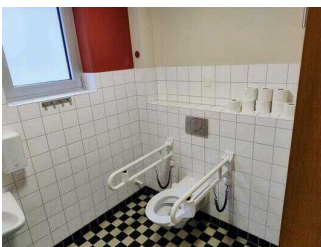
Public toilet door

©Randolph French



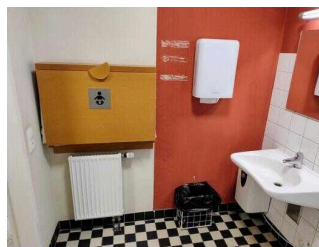
Public toilet

©Randolph French



Public toilet

©Randolph French



Public toilet

©Randolph French

Door to public toilet

Clear width of the passageway: 120 cm

Type of door/passageway: other

The door is opened requiring the users own effort. The door is opened by a service technician.

The door or door frame is visually contrasted to its surroundings.

The smaller manoeuvring area in front of / behind the door is 153 cm deep an 144 cm wide.

The threshold height: 0 cm

Toilet/WC

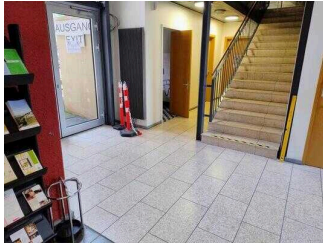
There is a uni-sex toilet.

There is a toilet available for people with disabilities.

Washbasin/sink

Additional information only available in German: Ein Wickeltisch (hochklappbar) für Kleinkinder ist vorhanden.

Path from the counter to the toilet



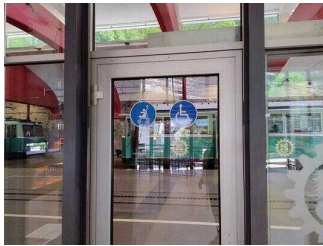
Path from the counter to the toilet

©Randolph French

Minimum width of the corridor/way/aisle: 115 cm

The objective of the path is within sight.

Door between waiting room and platform



Door between waiting room and platform

©Randolph French

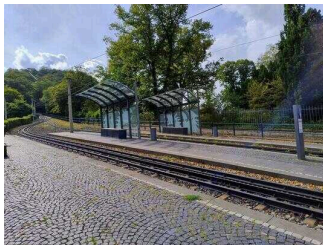
The door is opened by a service technician.

The door or door frame is visually contrasted to its surroundings.

The threshold height: 1,5 cm

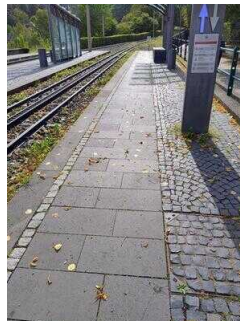
Middle station

Platform middle station



Middle station

©Randolph French



Middle station

©Randolph French



**Middle station
direction indicator**

©Randolph French



Middle station bench

©Randolph French



**Middle station access
route**

©Randolph French

There are seating areas available.

There is no written train/bus platform/ship pier information available.

There is no audible train/bus platform/ship pier information available.

Additional information only available in German: Die Haltestelle an der Mittelstation hat ein Gefälle von 11%.

Ticket machine middle station



**Ticket machine
middle station**

©Randolph French

The HIGHEST position of the operating elements from the ground: 160 cm

The LOWEST position of the operating elements from the ground: 100 cm

Mountain station

Platform mountain station



Mountain station entrance

©Randolph French



Mountain station information board

©Randolph French



Mountain station

©Randolph French



Miniature model at the mountain station

©Randolph French

There are no seating areas available.

There is written train/bus platform/ship pier information available.

There is no audible train/bus platform/ship pier information available.

Additional information only available in German: Das maximale Gefälle an der Haltestelle beträgt 8%. Die Durchgangsbreite des Eingangs beträgt 90cm, des Ausgangs 1,70m. Der Fahrkartenschalter ist nicht mehr in Betrieb.

Ticket machine mountain station



Ticket machine mountain station

©Randolph French

The HIGHEST position of the operating elements from the ground: 150 cm

The LOWEST position of the operating elements from the ground: 90 cm

Ramp to the entry of the mountain station



Ramp to the entry of
the mountain station

©Randolph French

Maximum longitudinal gradient of the ramp: 5 %

Minimum width of the ramp: 220 cm

Public toilet at the parking lot



Public toilet

©Randolph French

Public toilet at the parking lot under the bridge



Public toilet at the
parking lot under the
bridge

©Randolph French



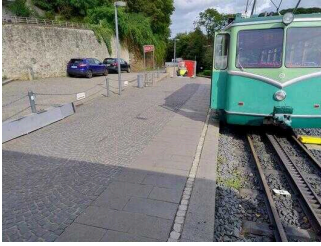
Public toilet at the
parking lot under the
bridge

©Randolph French

Am Parkplatz unter der Brücke befindet sich ein weiteres öffentliches WC. Der Zugang ist mit einem Euroschlüssel oder gegen Münzeinwurf möglich.

Aids

Alarm/Aids



Storage of the mobile ramps at the mountain station platform

©Randolph French

There is an alarm.

There is no clearly visible alarm.

Aids are offered.

Wheelchair,

Additional information only available in German: There is an audio file with a description of the ride to the Drachenfels.