

"Drachenfelsbahn" Königswinter

Drachenfelsstr. 51
53639 Königswinter

Tel: +49 2223 92090

info@drachenfelsbahn.de
www.drachenfelsbahn.de

Information for visually impaired and blind people

Information on accessibility was reviewed on September 11, 2024 as part of the quality criteria / system "Tourism for all".

Images of the building/object



"Drachenfelsbahn"
Königswinter

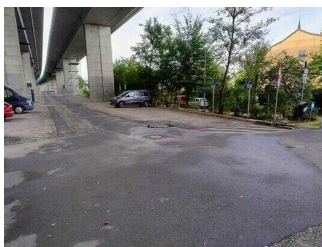
©www.drachenfelsbahn.de



"Drachenfelsbahn"
Königswinter

©Randolph French

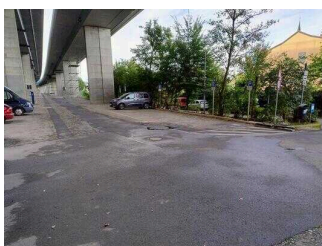
Parking lot under the bridge



Parking lot under the
bridge

©Randolph French

Parking lot under the bridge



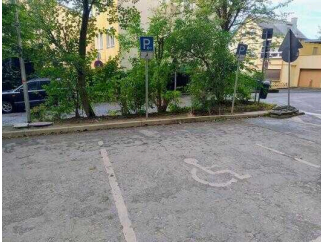
Parking lot under the
bridge

©Randolph French



Parking lot under the
bridge

©Randolph French



Parking lot under the bridge

©Randolph French

There is a general parking lot available.

There is at least one parking space for people with disabilities.

There is/are 3 parking space(s) for people with disabilities.

Parking space width: 345 cm

Parking space length: 500 cm

Distance from the parking space(s) for people with disabilities to the entrance area: 100 m

The parking space(s) for people with disabilities is/are marked.

External path from the parking lot to the main entrance



External path from the parking lot to the main entrance

©Randolph French



External path from the parking lot to the main entrance

©Randolph French

Width of the path: 300 cm

Length of the path: 80 m

The sidewalk marking is visually rich in contrast. The sidewalk boundary can be detected tactilely.

Parking lot next to the railway tracks



Parking lot next to the railway tracks

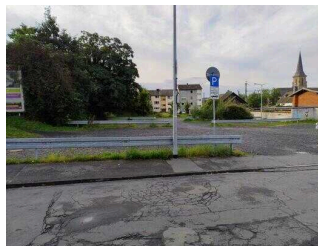
©Randolph French

Parking lot next to the railway track



Parking lot next to the railway track

©Randolph French



Parking lot next to the railway track

©Randolph French

There is no company parking available.

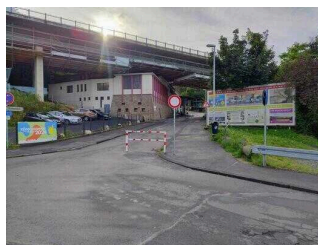
Es stehen an den Bahngleisen zwei weitere sehr große Parkflächen zur Verfügung. Dort sind zwar keine Stellplätze für Menschen mit Behinderung ausgeschildert, aber dennoch nutzbar.

External path from the parking lot next to the tracks to the main entrance



External path from the parking lot next to the tracks to the main entrance

©Randolph French



External path from the parking lot next to the tracks to the main entrance

©Randolph French

Width of the path: 400 cm

Length of the path: 80 m

The sidewalk marking is visually rich in contrast. The sidewalk boundary can be detected tactilely.

ÖPNV



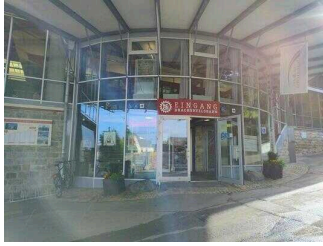
ÖPNV

©Randolph French

Blank module

Die nächste ÖPNV-Haltestelle (Königswinter Drachenfelsbahn) befindet sich in ca. 200m Entfernung auf der anderen Seite der Bahngleise.

Main entrance



Main entrance

©Randolph French

Main entrance area



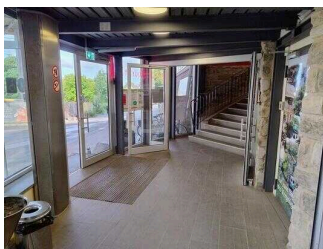
Main entrance door

©Randolph French



Floor covering in front of the main entrance door

©Randolph French



Main entrance area indoor

©Randolph French

The entrance area is visually contrasted to its surrounding area.

The entrance area is recognizable by a tactile change of floor covering.

The entrance door

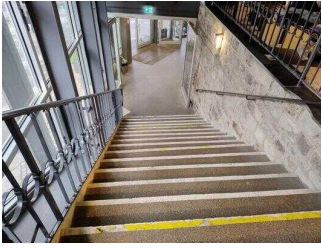
Type of door: single leaf

The door is opened without using any force (lever handle, light barrier sensor, motion detector, etc.).

The door or door frame is visually contrasted to its surroundings.

Additional information only available in German: Hinter dem Eingangsbereich gelangt man nur über Treppen zu den anderen Gebäudebereichen.

Stairs main entrance



Stairs main entrance

©Randolph French

Existing thresholds/steps: 17

The height of the thresholds/steps: 16 cm

The stairs are straight.

The staircase has handrails on both sides.

The handrails are not horizontally extended at the beginning and at the end of the staircases.

There is no tactile information about the floor available at the beginning and end of the flights of stairs.

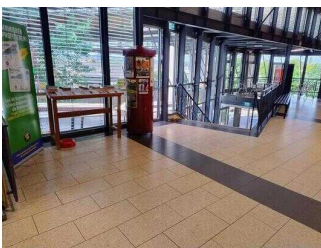
At least the first and last steps have visually rich contrasting edges on the horizontal and vertical surfaces of the steps.

There is no visual contrast between the flooring and the stairways.

There is no tactile contrast between the flooring and the stairways.

The stairs are well lit and glare-free.

Path from the stairs to the cash desk



Path from the stairs
at main entrance to
the cash desk

©Randolph French

Length of the corridor/way/aisle: 8 m

There are no hindrances, e.g. objects protruding into the path.

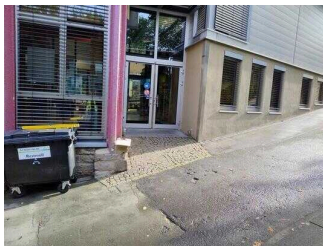
Side entrance



Side entrance

©Randolph French

Side entrance



Side entrance door

©Randolph French



Side entrance signpost

©Randolph French



Side entrance indoor

©Randolph French

The entrance area is visually contrasted to its surrounding area.

The entrance area is recognizable by a tactile change of floor covering.

The entrance door

Type of door: double leaf

The door is opened without using any force (lever handle, light barrier sensor, motion detector, etc.).

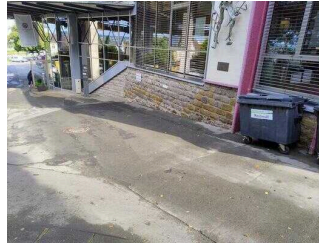
The door or door frame is visually contrasted to its surroundings.

External path from main to side entrance



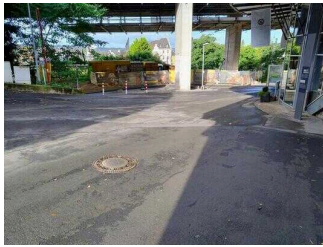
Signposting for side entrance

©Randolph French



External path from main to side entrance

©Randolph French



External path from main to side entrance

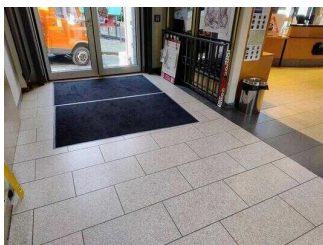
©Randolph French

Width of the path: 400 cm

Length of the path: 25 m

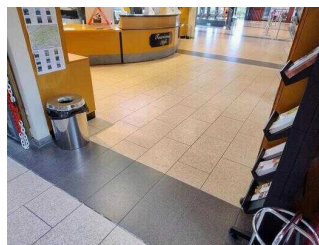
The sidewalk marking is visually rich in contrast. The sidewalk boundary can be detected tactilely.

Path from the side entrance to the cash desk



Path from the side entrance to the cash desk

©Randolph French



Path from the side entrance to the cash desk

©Randolph French

Length of the corridor/way/aisle: 7 m

There are no hindrances, e.g. objects protruding into the path.

Valley station

Valley station



Valley station

©Randolph French



Valley station

©Randolph French



Gear rail

©Randolph French

Distance from the train/bus platform/ship pier to the entrance area for people with disabilities: 7 m

There are visually high-contrast ground indicators (e.g. guide strips) available.

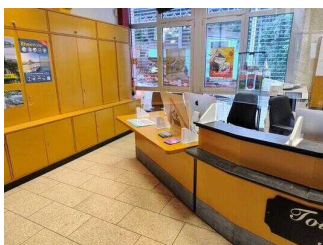
There are no tactile ground indicators (e.g. guide strips) available.

There is written train/bus platform/ship pier information available.

There is no audible train/bus platform/ship pier information available.

Additional information only available in German: A track with a cogwheel construction usually has to be crossed.

Counter/Cash Desk



Lowered area of the counter

©Randolph French



Cash register display

©Randolph French



Cash Desk signpost

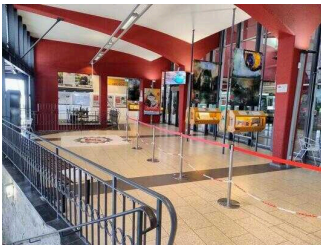
©Randolph French

The walkway from the entrance door to the counter is not marked with visually contrasting markings (e.g. carpet).

The walkway from the entrance door to the counter is not marked by tactile markings (e.g. floor indicators).

The cash register display/price indication at the register is easily recognizable (e.g. large and swiveling).

Waiting room with exhibits



Waiting room with exhibits

©Randolph French



Exhibits

©Randolph French

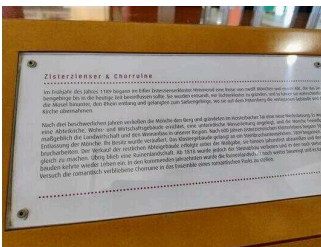
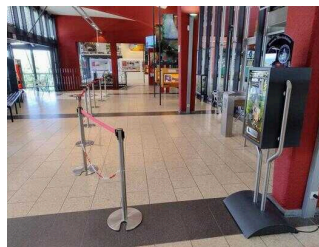


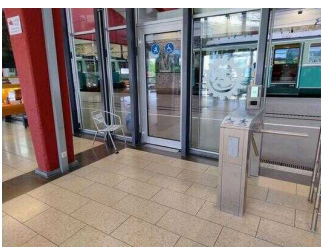
Exhibit descriptions

©Randolph French



Platform exit area

©Randolph French



Platform exit

©Randolph French

The main "walkways" are not visually rich in contrast.

The main "walkways" are not tactilely detectable in the room.

There are no hindrances, e.g. protruding objects present in the room.

Public toilet in the building



Public toilet door

©Randolph French



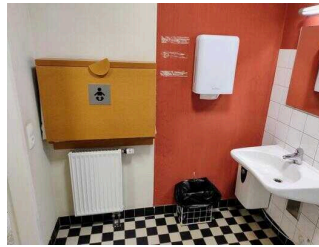
Public toilet

©Randolph French



Public toilet

©Randolph French



Public toilet

©Randolph French

Door to public toilet

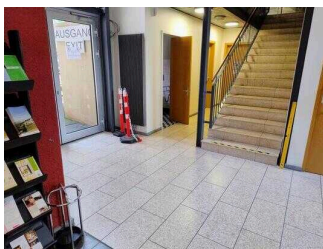
Type of door/passageway: other

The door is opened requiring the users own effort. The door is opened by a service technician.

The door or door frame is visually contrasted to its surroundings.

Additional information only available in German: Ein Wickeltisch (hochklappbar) für Kleinkinder ist vorhanden.

Path from the counter to the toilet



Path from the counter to the toilet

©Randolph French

Length of the corridor/way/aisle: 8 m

There are no hindrances, e.g. objects protruding into the path.

Door between waiting room and platform



Door between waiting room and platform

©Randolph French

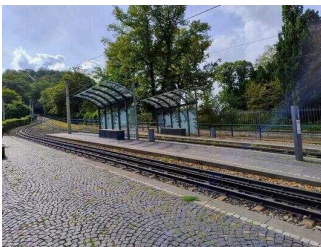
Type of door: single leaf

The door is opened by a service technician.

The door or door frame is visually contrasted to its surroundings.

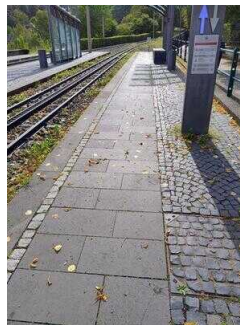
Middle station

Platform middle station



Middle station

©Randolph French



Middle station

©Randolph French



Middle station direction indicator

©Randolph French



Middle station bench

©Randolph French



Middle station access route

©Randolph French

Distance from the train/bus platform/ship pier to the entrance area for people with disabilities: 10 m

There are visually high-contrast ground indicators (e.g. guide strips) available.

There are tactile ground indicators (e.g. guide strips) available.

There is no written train/bus platform/ship pier information available.

There is no audible train/bus platform/ship pier information available.

Additional information only available in German: Die Haltestelle an der Mittelstation hat ein Gefälle von 11%.

Mountain station

Platform mountain station



Mountain station entrance

©Randolph French



Mountain station information board

©Randolph French



Mountain station

©Randolph French



Miniature model at the mountain station

©Randolph French

Distance from the train/bus platform/ship pier to the entrance area for people with disabilities: 10 m

There are visually high-contrast ground indicators (e.g. guide strips) available.

There are tactile ground indicators (e.g. guide strips) available.

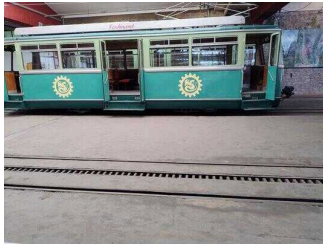
There is written train/bus platform/ship pier information available.

There is no audible train/bus platform/ship pier information available.

Additional information only available in German: Das maximale Gefälle an der Haltestelle beträgt 8%. Die Durchgangsbreite des Eingangs beträgt 90cm, des Ausgangs 1,70m. Der Fahrkartenschalter ist nicht mehr in Betrieb.

Cabin room / Cable cars

Rack railway wagon



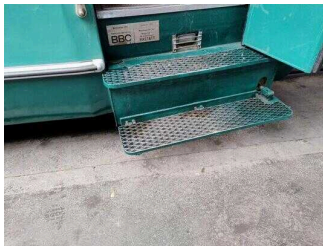
Rack railway wagon

©Randolph French



Rack railway wagon door

©Randolph French



Rack railway wagon entry steps

©Randolph French

The cabin door or frame is visually contrasted to its surroundings.

Additional information is provided by the operator:

The journey is accompanied by staff.

Public toilet at the parking lot



Public toilet

©Randolph French

Public toilet at the parking lot under the bridge



Public toilet at the parking lot under the bridge

©Randolph French



Public toilet at the parking lot under the bridge

©Randolph French

Am Parkplatz unter der Brücke befindet sich ein weiteres öffentliches WC. Der Zugang ist mit einem Euroschlüssel oder gegen Münzeinwurf möglich.

Aids

Alarm/Aids



Storage of the mobile ramps at the mountain station platform

©Randolph French

Assistance dogs (companion dogs, guide dogs etc.) are allowed in all relevant areas/rooms of the establishment/offer.

Aids are offered.

Wheelchair,

Other aids offered: Es werden an allen drei Haltestellen mobile Rampen für den stufenlosen Zugang in die Zahnradbahn bereitgehalten.

Additional information only available in German: There is an audio file with a description of the ride to the Drachenfels.

Operating elements / guidance system

Visual and tactile design



Signage

©Randolph French



Signage

©Randolph French



Signage

©Randolph French



Signage

©Randolph French



Signage

©Randolph French



Signage

©Randolph French



Platform information

©Randolph French



Platform information

©Randolph French