

"Drachenfelsbahn" Königswinter

Drachenfelsstr. 51
53639 Königswinter

Tel: +49 2223 92090

info@drachenfelsbahn.de
www.drachenfelsbahn.de

Information for people with walking difficulties and wheelchair users

Information on accessibility was reviewed on September 11, 2024 as part of the quality criteria / system "Tourism for all".

Images of the building/object



"Drachenfelsbahn"
Königswinter

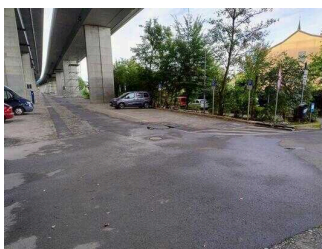
©www.drachenfelsbahn.de



"Drachenfelsbahn"
Königswinter

©Randolph French

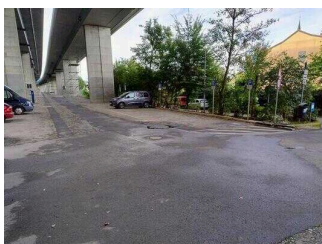
Parking lot under the bridge



Parking lot under the
bridge

©Randolph French

Parking lot under the bridge



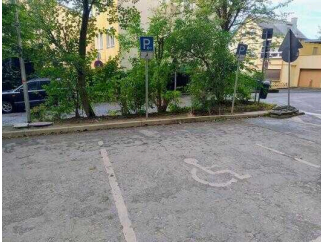
Parking lot under the
bridge

©Randolph French



Parking lot under the
bridge

©Randolph French



Parking lot under the bridge

©Randolph French

There is a general parking lot available.

There is at least one parking space for people with disabilities.

There is/are 3 parking space(s) for people with disabilities.

Parking space width: 345 cm

Parking space length: 500 cm

The surface quality of the car park is vibration-free and is easy to walk and drive on (e.g. asphalt, narrow-jointed slabs, etc.).

Distance from the parking space(s) for people with disabilities to the entrance area: 100 m

The parking space(s) for people with disabilities is/are marked.

External path from the parking lot to the main entrance



External path from the parking lot to the main entrance

©Randolph French



External path from the parking lot to the main entrance

©Randolph French

Width of the path: 300 cm

Length of the path: 80 m

The surface of the path is low in vibrations and easy to walk on (e.g. asphalt, narrow-jointed slabs, etc.).

Maximum longitudinal gradient of the path: 14 %

Maximum longitudinal gradient over a distance of 25 m.

Parking lot next to the railway tracks



Parking lot next to the railway tracks

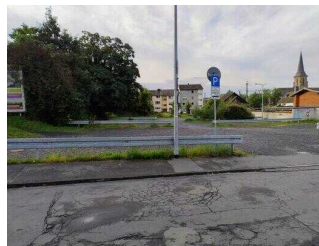
©Randolph French

Parking lot next to the railway track



Parking lot next to the railway track

©Randolph French



Parking lot next to the railway track

©Randolph French

There is no company parking available.

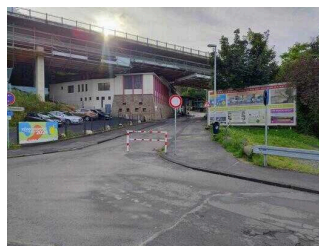
Es stehen an den Bahngleisen zwei weitere sehr große Parkflächen zur Verfügung. Dort sind zwar keine Stellplätze für Menschen mit Behinderung ausgeschildert, aber dennoch nutzbar.

External path from the parking lot next to the tracks to the main entrance



External path from the parking lot next to the tracks to the main entrance

©Randolph French



External path from the parking lot next to the tracks to the main entrance

©Randolph French

Width of the path: 400 cm

Length of the path: 80 m

The surface of the path is low in vibrations and easy to walk on (e.g. asphalt, narrow-jointed slabs, etc.).

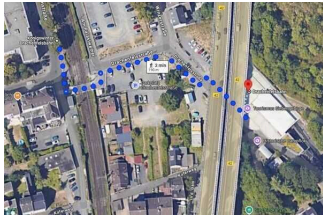
The path's clear width is limited on account of equipment.

The path's clear width is at least: 250 cm despite existing equipment

Maximum longitudinal gradient of the path: 7 %

Maximum longitudinal gradient over a distance of 30 m.

ÖPNV



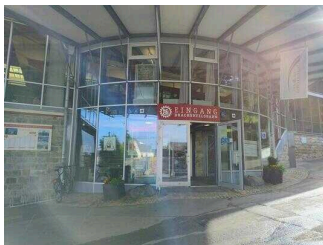
ÖPNV

©Randolph French

Blank module

Die nächste ÖPNV-Haltestelle (Königswinter Drachenfelsbahn) befindet sich in ca. 200m Entfernung auf der anderen Seite der Bahngleise.

Main entrance



Main entrance

©Randolph French

Main entrance area



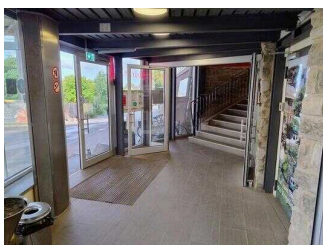
Main entrance door

©Randolph French



Floor covering in front of the main entrance door

©Randolph French



Main entrance area indoor

©Randolph French

The entrance / access is not possible without steps.

The entrance door

Clear width of the passageway: 109 cm

Type of door: single leaf

The door is opened without using any force (lever handle, light barrier sensor, motion detector, etc.).

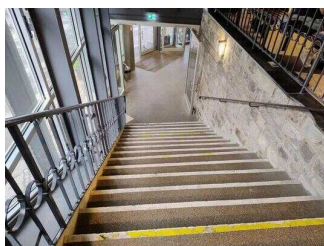
The WIDTH of the smaller manoeuvring area in front of / behind the door: 200 cm

The DEPTH of the smaller manoeuvring area in front of / behind the door: 200 cm

The threshold height: 1 cm

Additional information only available in German: Hinter dem Eingangsbereich gelangt man nur über Treppen zu den anderen Gebäudebereichen.

Stairs main entrance



Stairs main entrance

©Randolph French

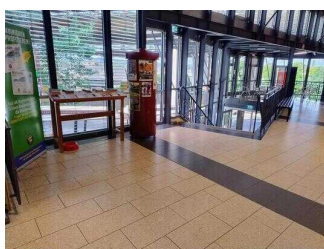
Existing thresholds/steps: 17

The height of the thresholds/steps: 16 cm

The stairs are straight.

The staircase has handrails on both sides.

Path from the stairs to the cash desk



Path from the stairs
at main entrance to
the cash desk

©Randolph French

Length of the corridor/way/aisle: 8 m

Minimum width of the corridor/way/aisle: 250 cm

The width of the path/corridor is not restricted.

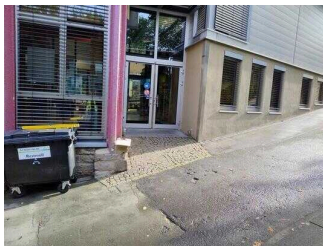
Side entrance



Side entrance

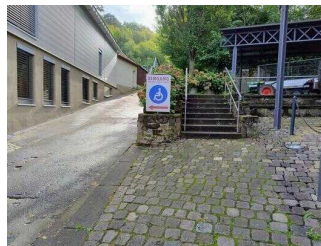
©Randolph French

Side entrance



Side entrance door

©Randolph French



Side entrance signpost

©Randolph French



Side entrance indoor

©Randolph French

The entrance / access to the building is possible without steps.

The entrance door

Clear width of the passageway: 178 cm

Type of door: double leaf

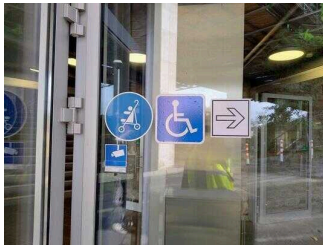
The door is opened without using any force (lever handle, light barrier sensor, motion detector, etc.).

The WIDTH of the smaller manoeuvring area in front of / behind the door: 200 cm

The DEPTH of the smaller manoeuvring area in front of / behind the door: 200 cm

The threshold height: 1 cm

External path from main to side entrance



Signposting for side entrance

©Randolph French



External path from main to side entrance

©Randolph French



External path from main to side entrance

©Randolph French

Width of the path: 400 cm

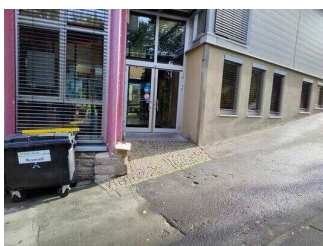
Length of the path: 25 m

The surface of the path is low in vibrations and easy to walk on (e.g. asphalt, narrow-jointed slabs, etc.).

Maximum longitudinal gradient of the path: 14 %

Maximum longitudinal gradient over a distance of 15 m.

Ramp side entrance



Ramp side entrance

©Randolph French

Maximum longitudinal gradient of the ramp: 24 %

Minimum width of the ramp: 224 cm

Length of the longest ramp section: 2,5 m

The ramp has a total length of 3 m, including any existing landings.

The ramp has no handrail.

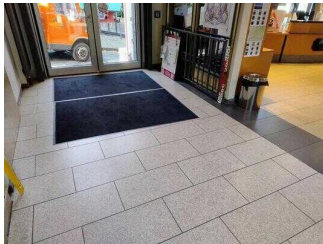
The WIDTH of the manoeuvring space in front of the ramp: 200 cm

The DEPTH of the manoeuvring space in front of the ramp: 200 cm

The WIDTH of the manoeuvring space at the end of the ramp: 200 cm

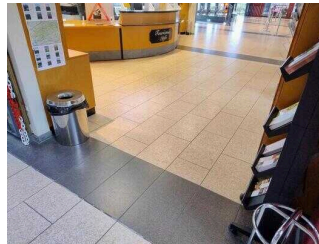
The DEPTH of the manoeuvring space at the end of the ramp: 200 cm

Path from the side entrance to the cash desk



Path from the side entrance to the cash desk

©Randolph French



Path from the side entrance to the cash desk

©Randolph French

Length of the corridor/way/aisle: 7 m

Minimum width of the corridor/way/aisle: 250 cm

Existing passageways are at least 88 cm wide.

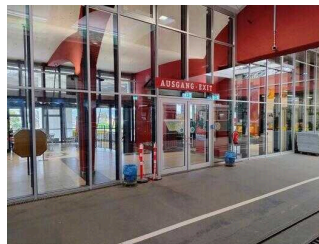
Valley station

Valley station



Valley station

©Randolph French



Valley station

©Randolph French



Gear rail

©Randolph French

Distance from the train/bus platform/ship pier to the entrance area for people with disabilities: 7 m

Width of the manoeuvring space along the train/bus platform/ship pier: 7 cm

There are no seating areas available.

Aids are offered for boarding and disembarking: mobile Rampen

There is written train/bus platform/ship pier information available.

Additional information only available in German: A track with a cogwheel construction usually has to be crossed.

Counter/Cash Desk



Lowered area of the counter

©Randolph French



Cash register display

©Randolph French



Cash Desk signpost

©Randolph French

The WIDTH of the manoeuvring space in front of the counter: 200 cm

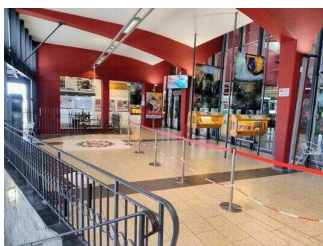
The DEPTH of the manoeuvring space in front of the counter: 200 cm

The counter / cash desk is at its highest point 102 cm high.

The counter / cash desk is at its lowest point 76 cm high.

There is another, equivalent communication possibility while in a sitting position.

Waiting room with exhibits



Waiting room with exhibits

©Randolph French



Exhibits

©Randolph French

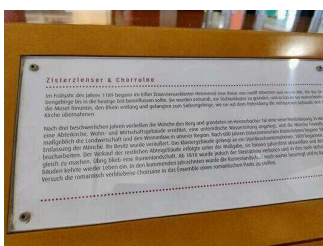
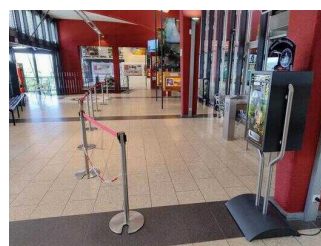


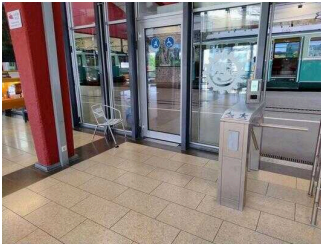
Exhibit descriptions

©Randolph French



Platform exit area

©Randolph French



Platform exit

©Randolph French

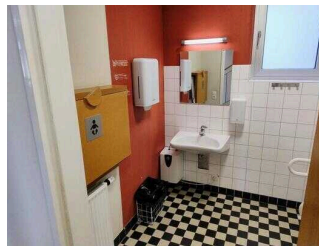
The width of the narrowest passageway in the room: 94 cm

Public toilet in the building



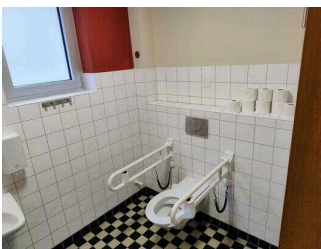
Public toilet door

©Randolph French



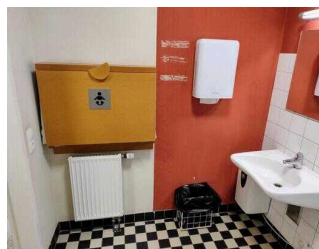
Public toilet

©Randolph French



Public toilet

©Randolph French



Public toilet

©Randolph French

Door to public toilet

Clear width of the passageway: 120 cm

Type of door/passageway: other

The door is opened requiring the users own effort. The door is opened by a service technician.

The smaller manoeuvring area in front of / behind the door is 153 cm deep an 144 cm wide.

The threshold height: 0 cm

The door opens outwards. The door opens to the side (room-saving door, sliding door).

The toilet door can be opened without a key.

Toilet/WC

There is a uni-sex toilet.

There is a toilet available for people with disabilities.

The depth of the toilet bowl: 70 cm

The WIDTH of the manoeuvring space left of the toilet: 64 cm

The DEPTH of the manoeuvring space left of the toilet: 70 cm

The WIDTH of the manoeuvring space right of the toilet: 93 cm

The DEPTH of the manoeuvring space right of the toilet: 70 cm

The WIDTH of the manoeuvring space in front of the toilet: 144 cm

The DEPTH of the manoeuvring space in front of the toilet: 153 cm

The height of the toilet seat: 46 cm

Access to the manoeuvring space right or left of the toilet is restricted. The passage width is: 64 cm.

There is a grab rail on the left side of the toilet.

The height of the left grab rail: 81 cm

The length of the left grab rail: 84 cm

The grab rail on the left of the toilet can be flipped-up.

There is a grab rail on the right side of the toilet.

The height of the right grab rail: 81 cm

The length of the right grab rail: 84 cm

The grab rail on the right of the toilet can be flipped-up.

There are grab rails available on the right and left of the toilet.

The distance between the left and right grab rail is 68 cm.

Washbasin/sink

The WIDTH of the manoeuvring space in front of the sink: 153 cm

The DEPTH of the manoeuvring space in front of the sink: 144 cm

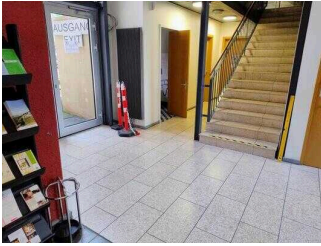
The height of the sink (front upper edge): 80 cm

The sink is wheelchair compatible at a height of 67 cm and a depth of less than 30 cm.

The mirror is not visible while standing or sitting.

Additional information only available in German: Ein Wickeltisch (hochklappbar) für Kleinkinder ist vorhanden.

Path from the counter to the toilet



Path from the counter
to the toilet

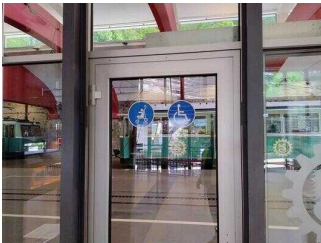
©Randolph French

Length of the corridor/way/aisle: 8 m

Minimum width of the corridor/way/aisle: 115 cm

Existing passageways are at least 88 cm wide.

Door between waiting room and platform



Door between waiting
room and platform

©Randolph French

Clear width of the passageway: 90 cm

Type of door: single leaf

The door is opened by a service technician.

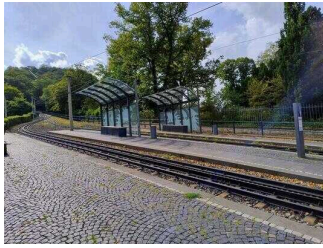
The WIDTH of the smaller manoeuvring area in front of / behind the door: 200 cm

The DEPTH of the smaller manoeuvring area in front of / behind the door: 200 cm

The threshold height: 1,5 cm

Middle station

Platform middle station



Middle station

©Randolph French



Middle station

©Randolph French



Middle station
direction indicator

©Randolph French



Middle station bench

©Randolph French



Middle station access
route

©Randolph French

Distance from the train/bus platform/ship pier to the entrance area for people with disabilities: 10 m

Width of the manoeuvring space along the train/bus platform/ship pier: 306 cm

There are seating areas available.

Aids are offered for boarding and disembarking: mobile Rampen

There is no written train/bus platform/ship pier information available.

Additional information only available in German: Die Haltestelle an der Mittelstation hat ein Gefälle von 11%.

Ticket machine middle station



Ticket machine
middle station

©Randolph French

The WIDTH of the manoeuvring space in front of the machine: 200 cm

The DEPTH of the manoeuvring space in front of the machine: 200 cm

The HIGHEST position of the operating elements from the ground: 160 cm

The LOWEST position of the operating elements from the ground: 100 cm

Mountain station

Platform mountain station



Mountain station
entrance

©Randolph French



Mountain station
information board

©Randolph French



Mountain station

©Randolph French



Miniature model at
the mountain station

©Randolph French

Distance from the train/bus platform/ship pier to the entrance area for people with disabilities: 10 m

Width of the manoeuvring space along the train/bus platform/ship pier: 470 cm

There are no seating areas available.

Aids are offered for boarding and disembarking: mobile Rampe

There is written train/bus platform/ship pier information available.

Additional information only available in German: Das maximale Gefälle an der Haltestelle beträgt 8%. Die Durchgangsbreite des Eingangs beträgt 90cm, des Ausgangs 1,70m. Der Fahrkartenschalter ist nicht mehr in Betrieb.

Ticket machine mountain station



Ticket machine
mountain station

©Randolph French

The WIDTH of the manoeuvring space in front of the machine: 200 cm

The DEPTH of the manoeuvring space in front of the machine: 200 cm

The HIGHEST position of the operating elements from the ground: 150 cm

The LOWEST position of the operating elements from the ground: 90 cm

Ramp to the entry of the mountain station



Ramp to the entry of
the mountain station

©Randolph French

Maximum longitudinal gradient of the ramp: 5 %

Minimum width of the ramp: 220 cm

Length of the longest ramp section: 7 m

The ramp has a total length of 7 m, including any existing landings.

The ramp has a handrail on one side.

The handrails are not horizontally extended at the beginning and at the end.

The WIDTH of the manoeuvring space in front of the ramp: 200 cm

The DEPTH of the manoeuvring space in front of the ramp: 200 cm

The WIDTH of the manoeuvring space at the end of the ramp: 200 cm

The DEPTH of the manoeuvring space at the end of the ramp: 200 cm

Cabin room / Cable cars

Rack railway wagon



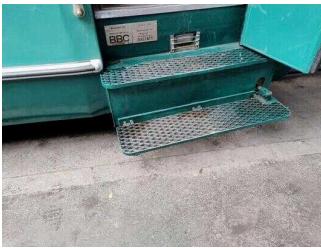
Rack railway wagon

©Randolph French



Rack railway wagon door

©Randolph French



Rack railway wagon entry steps

©Randolph French

Clear passage width of the cabin door: 120 cm

The WIDTH of space for wheelchair and walker users in the cabin: 142 cm

The DEPTH of space for wheelchair and walker users in the cabin: 125 cm

The width of the narrowest passageway to the wheelchair/walker areas in the cabin: 120 cm

Technical aids for entering and exiting the vehicle.

Technical aids for entering and exiting the vehicle: Es stehen an allen drei Haltestellen mobile Rampen zur Verfügung.

There is a threshold/step (height difference) when entering/exiting the cabin.

The height of the threshold/step: 23 cm

Distance between cabin and platform edge: 71 cm

Further remarks: Die Höhe des Einstiegs (Abstand zwischen Kabine und Bahnsteigkante) variiert an den verschiedenen Haltestellen um wenige Zentimeter (71-73 cm).

There are seats available in the cabin.

Additional information is provided by the operator:

no transport of electric wheelchairs

The number of wheelchair users that can be transported at the same time: 2

The journey is accompanied by staff.

Public toilet at the parking lot



Public toilet

©Randolph French

Public toilet at the parking lot under the bridge



Public toilet at the parking lot under the bridge

©Randolph French



Public toilet at the parking lot under the bridge

©Randolph French

Am Parkplatz unter der Brücke befindet sich ein weiteres öffentliches WC. Der Zugang ist mit einem Euroschlüssel oder gegen Münzeinwurf möglich.

Aids

Alarm/Aids



Storage of the mobile ramps at the mountain station platform

©Randolph French

Assistance dogs (companion dogs, guide dogs etc.) are allowed in all relevant areas/rooms of the establishment/offer.

Aids are offered.

Wheelchair,

Other aids offered: Es werden an allen drei Haltestellen mobile Rampen für den stufenlosen Zugang in die Zahnradbahn bereitgehalten.

Additional information only available in German: There is an audio file with a description of the ride to the Drachenfels.